

# STOPPERS

## QS-5000 STOPPER, PENNYHEAD

Hollow stoppers with a closed bottom, ground for use in outer joints.

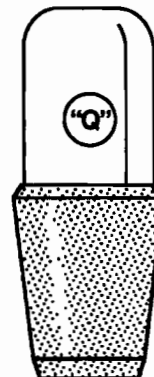
Joint Size	Code	Joint Size	Code
10/30	-110	29/42	-214
14/35	-111	34/45	-215
19/38	-112	45/50	-216
24/40	-113	55/50	-217



## QS-5025 STOPPER, CAP STYLE

Inner joint with cylindrical top and open bottom. Ground for use in outer joints.

Joint Size	Code	Joint Size	Code
10/30	-110	29/42	-214
14/35	-111	34/45	-215
19/38	-112	45/50	-216
24/40	-113	55/50	-217



## QS-5010 STOPPER, PENNYHEAD

The 38 size is hollow. All other sizes are solid, ground for use with flask length outer joints.

Size	Code	Size	Code
9	-110	22	-214
13	-111	27	-215
16	-112	32	-216
19	-113	38	-217



## QS-5027 STOPPER, CAP STYLE

Inner joint with cylindrical top, open bottom and a inner suspension hook. Ground for use in outer joints.

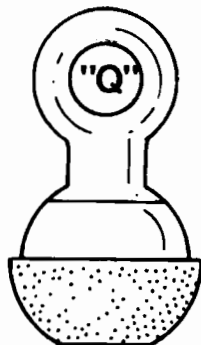
Joint Size	Code
24/40	-110
29/42	-111
34/45	-112
45/50	-113



## QS-5015 STOPPER, PENNYHEAD

Spherical ball joint stoppers ground for use in socket joints.

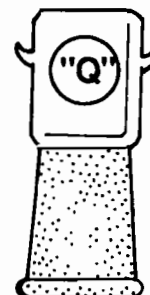
Joint Size	Code
12/5	-110
18/9	-111
28/15	-112
35/20	-113
35/25	-114



## QS-5030 STOPPER, CAP STYLE

Outer joint with cylindrical top and side hooks for the attachment of springs. Ground for use with inner joints.

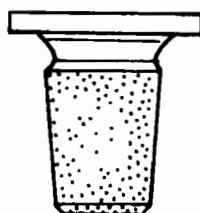
Joint Size	Code	Joint Size	Code
10/30	-110	29/42	-214
14/35	-111	34/45	-215
19/38	-112	45/50	-216
24/40	-113	55/50	-217



## QS-5020 STOPPER, FLAT HEAD

Solid stoppers designed to be inverted and placed on end preventing spilling on table surfaces.

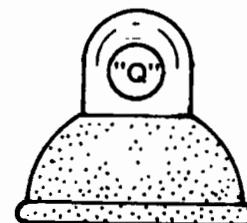
Size	Code
13	-110
16	-111



## QS-5035 STOPPER, CAP STYLE

Socket joints. Ground for use with ball joints.

Joint Size	Code
12/5	-110
18/9	-111
28/15	-112
35/20	-113
35/25	-114



# STOPPERS

## QS-5040 STOPPER, TEFLON

Hollow stoppers made entirely of teflon.  
Ground for use in outer joints.

Joint Size	Code	Joint Size	Code
10/30	-110	29/42	-214
14/35	-111	34/45	-215
19/38	-112	45/50	-216
24/40	-113	50/50	-217

## QS-5045 STOPPER, TEFLON

Solid stoppers made entirely of teflon.  
Ground for use in flask length outer joints.

Size	Code	Size	Code
9	-110	22	-214
13	-111	27	-215
16	-112	32	-216
19	-113	38	-217



# THERMOMETERS

## QT-1000 THERMOMETER

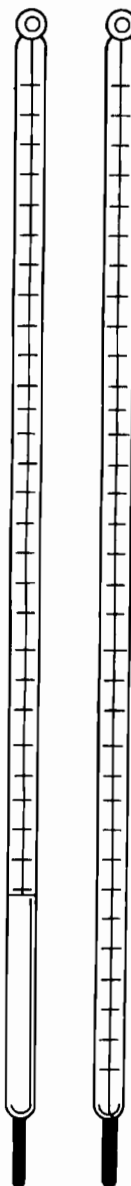
Centigrade, total immersion with yellow back, chemical type. Fully annealed and nitrogen filled above mercury. 1° C scale divisions. Thermometer top is finished with a suspension ring.

Range °C	Length	
	MM	Code
-35 to 50	305	-110
-20 to 110	305	-111
-20 to 150	305	-112
-10 to 260	405	-113
-10 to 400	405	-114

## QT-1200 THERMOMETER

Centigrade, 3" partial immersion with yellow back, chemical type. Fully annealed and nitrogen filled above mercury. 1° C scale divisions. Thermometer top is finished with a suspension ring.

Range °C	Length	
	MM	Code
-35 to 50	305	-110
-20 to 110	305	-111
-20 to 150	305	-112
-10 to 260	405	-113
-10 to 400	405	-114



## QT-1500 THERMOMETER

Centigrade, 6" immersion with yellow back, chemical type. Fully annealed and nitrogen filled above mercury. 1° C scale divisions. Designed for where deeper depth readings are required.

Range °C	Code
-20 to 110	-110
-20 to 150	-111
-10 to 250	-112
-10 to 400	-113

## QT-1800 THERMOMETER

Centigrade, 12" immersion with yellow back, chemical type. Fully annealed and nitrogen filled above mercury. 1° C scale divisions. Designed for where very deep depth readings are required.

Range °C	Code
-20 to 110	-110
-20 to 150	-111
-10 to 250	-112
-10 to 400	-113

